

Before operating the Power Chisel cont'd

- To remove the chisel press the locking button and remove.

Use Arbortech machine oil to regularly lubricate the cam. Squeeze a drop into the lubrication port **7** every 15 minutes of operation.

- Before plugging in, ensure that the on/off switch is in the OFF position.

9. Operating the Power Chisel.

Warning : Always wear correct safety clothing, including ear, eye and lung protection.

The Power Chisel should only be used with two hands, placing the left hand holding the chisel housing and the right hand holding the tool body in control of the switch. (as shown in fig.17)

- Use a maximum of 25° angle when removing wood. (see fig.18)
- Ensure the machine is running BEFORE contacting the material to be worked on.

NOTE : The Power Chisel will only work when the chisel **10 is engaged in the workpiece (this is when the chisel anvil (fig.2) comes in contact with the cam **5** .**

For detailed carving, the Power Chisel can be held as shown in fig.17

- Do not force the tool into the wood at steep angles.
- Do not use the chisels **10** as a lever to break out wood.

Warning : Always ensure that chisels are sharp! Blunt chisels will not cut and will wear the tool prematurely.

Warning : The chisel shaft becomes very hot during prolonged use. Only handle by the chisel blade.

Note : Do not cause motor speed to drop by forcing the chisel into the workpiece. This means you are using too much pressure.

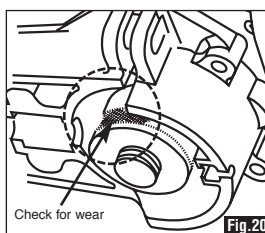
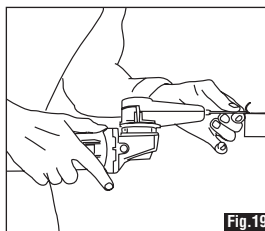
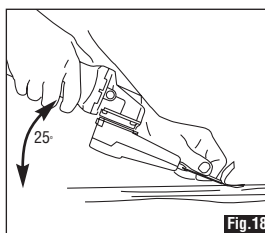
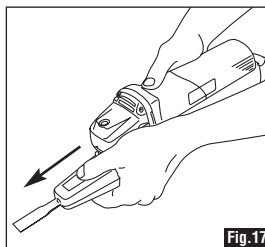
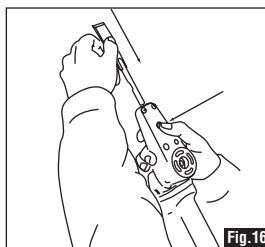
For fast rebates hold the Power Chisel upside down as seen in fig.19 Use only medium pressure. The stroke is delivered at constant power, speed and length, and will not cut faster by forcing the tool.

10. Maintenance

Note : Unplug the tool before carrying out any maintenance work.

Note : Ensure that the Power Chisel extension arm is always mounted securely. If loose, ensure that all screws are securely fitted.

- Regularly check that the bushes **11** and springs **12** **13** are in sound condition. If worn, replace using an Arbortech Power Chisel service kit.
- Inspect the cam **5** for excessive wear. (fig.20). If wear is greater than 2mm deep replace using an Arbortech replacement cam.
- To clean, gently remove all grit & dust inside the extension arm **1** using a soft brush.
- Regularly check for dust or foreign matter in the grinder motor vents.
- The chisel anvil will wear after time. Replace chisels when the shaft has worn in excess of 5mm.

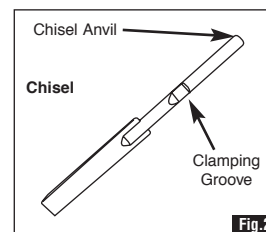
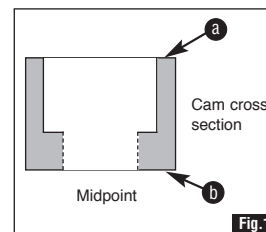
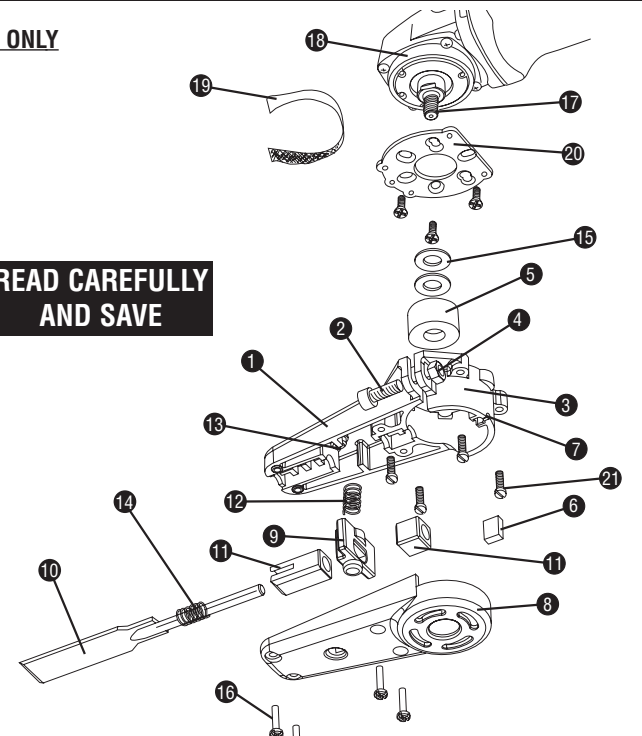


STANDARD PARTS KEY

THIS DIAGRAM IS AN OVERVIEW ONLY

- You will need:-
 Slotted screwdriver
 Medium Phillips head screwdriver
 Small adjustable spanner
 26mm (1") wrench or spanner

READ CAREFULLY AND SAVE



1. Power Chisel Extension Arm
2. Clamping Bolt
3. Clamping Nut
4. Adaptor Plate Screw Housing
5. Impact Cam
6. Felt Pad (Oil Reservoir)
7. Lubrication Port

8. Top Cover
9. Chisel Locking Button
10. Chisel
11. Bushes
12. Button Spring
13. Spring Locator
14. Chisel Holding Spring

15. Example Spacer Washer
16. Self Tapping Screws
17. Grinder Spindle
18. Grinder Collar
19. Emery Friction Strip
20. Adaptor Plate (MINO17)
21. Adaptor Plate Housing Screws
22. Countersunk Self Tapping Screws

Spacer Washers included in the following Power Chisel Kits:-

PCH100
 3 x M10 flat washers
 3 x M14 flat washers

PCH101
 3 x M10 flat washers

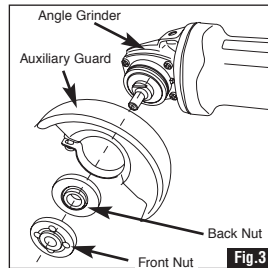
PCH102
 3 x M16 flat washers

- The chisels in this pack are extremely sharp and will become hot with prolonged use. Please use caution when handling chisels.
- All loose parts supplied in this kit must be removed from the Power Chisel arm before fitting onto the grinder.
- Always wear eye, ear and lung protection when using the Power Chisel.
- Continuous use of the Power Chisel may cause discomfort due to vibration. Rest regularly and wear gloves if problem persists.

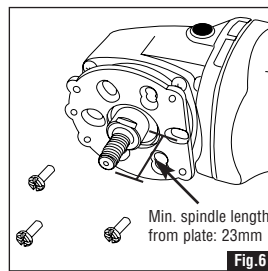
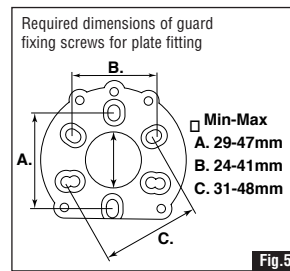
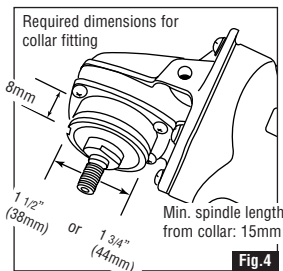
BASIC FITTING INSTRUCTIONS

Read the following instructions carefully to fit the Power Chisel Attachment to your existing 4" (100mm) or 4.5" (115mm) angle grinder. Please be aware that the Power Chisel Attachment may not fit all angle grinders. **All numbers with a circle eg: ⑧ refer to the standard parts key on page 1.**

1. If fitted, remove the back and front nuts from your angle grinder spindle ②. Remove the auxiliary grinder guard from the angle grinder. (See fig.3)



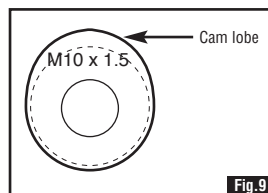
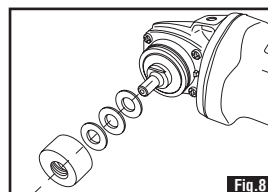
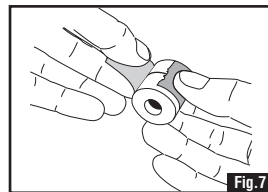
2. Check the following diagrams to see if the Power Chisel extension ① can be fitted to your angle grinder by using the grinder collar section (fig.4), or by using an Arbortech Adaptor Plate (MIN017) fig.5 & 6.



3. For plate fitting, refer to the instructions provided in the MIN017 adaptor plate package.

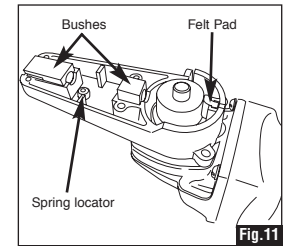
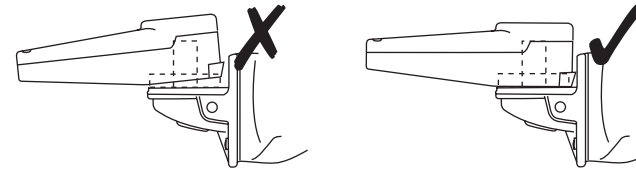
4. Fixing the cam.

- There are two cams ⑤ with two sets of washers ⑮ supplied in this kit (M10 & M14) remove the tape that holds the two cams ⑤ together as seen in fig.7.
- Remove the washers keeping them together with the same sized cam ie: M10 cam & M10 washers
- Place enough washers ⑮ over the grinder spindle ⑰ followed by correct sized cam ⑤ (fig. 8). The cam can be placed either way on the grinder spindle (17) depending on the height of the spindle, you would place the ② side (fig.1) down for grinder with a longer spindle.
- Tighten the cam ⑤ using a spanner (do not over-tighten) while holding down the spindle lock on the grinder so that the spindle does not turn.
- Position the cam lobe (fig. 9) so that it is facing the front of the machine as seen in fig. 12.

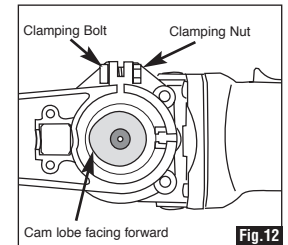


5. Fixing the Power Chisel Extension arm to the grinder collar

- Remove the top cover ⑧, chisel locking button ⑨ & button spring ⑫
- Place the extension arm ① over the grinder collar ⑬, taking care not to crush the felt pad ⑥ fitted inside of the power chisel extension arm ① (fig. 11). Make sure the extension arm is sitting flat on the grinder face (fig.10).



- Position the Power Chisel extension arm ① so that it is straight in line with the grinder motor (fig.12) and tighten the clamping bolt ② onto the clamping nut ③. If when fully tightened there is still movement with the extension arm, place the emery friction strips ⑲ (supplied) around the grinder collar ⑬ with the abrasive side facing in to the collar then tighten again.



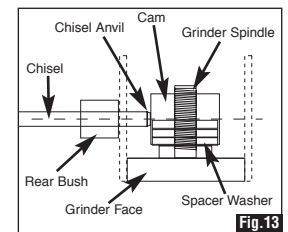
6. Aligning the cam with the chisel anvil

- Remove the sticky protective coating from the chisels ⑩ using any type of spirit, ie mineral turpentine.
- Place one of the chisels through the white bushes ⑪ so that the chisel anvil (see fig.2) meets with the cam ⑤ as shown in fig.13.

NOTE : The chisel anvil should meet in the middle of the cam ⑤ and should not touch the top or the bottom of the cam!

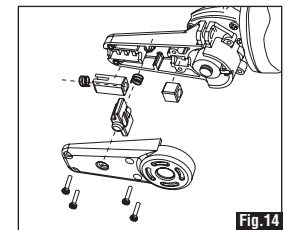
- To get the cam ⑤ at the correct height you may need to remove or add more washers ⑮ underneath the cam.

TIP : You can turn the cam upside down to give you more height!



7. Replacing the cover

- Remove the chisel ⑩ from the extension arm ①.
- Remove the button spring ⑫ onto the spring locator ⑬. Then place the chisel locking button ⑨ over the spring. Make sure the chisel locking button ⑨ is facing the correct way (see fig.14).
- Place the cover ⑧ onto the extension arm ①, making sure the locking button ⑨ goes through the hole on the cover ⑧ while still in position.
- Secure the cover ⑧ with the 4 self tapping screws ⑯.



8. Before operating the Power Chisel

NOTE : The chisel anvils must always be lubricated. Do this via the lubricating port (fig.15)

- When inserting chisels ⑩ into the extension arm ① press the chisel locking button ⑨ down, then insert the chisel with the clamping groove of the chisel (see fig. 2) on the opposite side to the locking button ⑨.

